

	133:	,	30	1	0	1	()	80%
	466:	,	40	0.9	0	28	()	70%
	466:	,	40	1	0	19	()	70%
	442: 1		39	0.8	0	35	()	70%
	442:		39	0.8	0	116	()	70%
	428: 2	, ,	40	0.7	0	60	()	80%
	429: 2	, ,	30	0.7	0	36	()	80%
	376:	,	39	1	0	27	()	70%
	131:	,	35	0.8	0	63	()	80%
	413: 1		45	0.9	0	26	()	40%
	413: 1		40	0.9	0	25	()	30%
	412: 1		30	0.9	0	102	()	50%
	412:		30	1	0	18	()	40%
	412:	, ,	30	0.9	0	32	()	50%
	441:	,	49	0.8	0	7	()	40%
	441:	,	54	0.8	0	16	()	40%
	433: 3		19	0.9	0	18	()	30%
	433: 1	,	54	0.8	0	34	()	40%
	47:		39	0.9	0	42	()	80%
	433: 1	,	49	0.8	0	14	()	50%
	433: 2	, ,	54	0.7	0	59	()	50%
	433: 2		39	0.8	0	22	()	40%
	426: 1	,	44	0.8	0	61	()	50%
	425: 3	,	44	0.9	0	16	()	50%
	414:	,	25	0.9	13	0	()	20%
	415:		40	0.8	0	12	()	30%
	412: 1		40	1	0	6	()	30%
	412: 1	,	40	1	0	8	()	30%
	283:		54	0.6	0	27	()	50%
	281:		54	0.8	0	21	()	40%
	281:		54	0.8	0	23	()	70%
	281:		54	0.7	0	35	()	40%
	279:		49	0.7	0	16	()	40%
	263:	,	40	0.7	0	45	()	40%
	263:	,	49	0.7	0	18	()	40%
	284:		49	0.8	0	44	()	40%
	284:	, , , ,	59	0.8	0	33	()	30%

	285:	, ,	49	0.6	0	17	()	40%
	285:		44	0.8	0	6	()	30%
	284:	,	44	0.8	0	31	()	40%
	284:	,	44	0.8	0	33	()	30%
	285:	,	44	0.7	0	1	()	40%
	285:	,	44	0.8	0	40	()	30%
	209: 2		25	0.9	0	16	()	40%
	209: 1		30	0.9	0	3	()	50%
	209: 1		35	0.7	0	2	()	40%
	252:		49	0.7	0	10	()	40%
	252:	, , ,	29	0.8	0	10	()	40%
	252:		34	0.9	0	5	()	70%
	261:		39	0.7	0	8	()	40%
	259:	,	49	0.5	0	2	()	80%
	127:	,	70	0.8	0	40	()	50%
	127:	,	70	0.5	0	38	()	50%
	125:	,	50	0.6	0	20	()	50%
	125:		50	0.7	0	40	()	40%
	129:	, , ,	40	0.8	0	120	()	50%
	133:	,	50	0.8	0	30	()	40%
	104:	,	40	0.7	35	0	()	20%
	104:	,	40	0.7	0	19	()	40%
	104:	, ,	65	0.8	0	29	()	50%
	434: 1	,	70	0.8	0	39	()	90%
	102: (238049		130	0.5	0	16.351	()	70%
	274:		69	0.7	0	49	()	60%
	429: 2	, ,	55	0.6	0	80	()	90%
	274:		65	0.7	0	71	()	60%
	274:		70	0.7	0	122	()	60%
	429: 1	, ,	64	0.6	0	59	()	30%
	416:		65	0.7	0	66	()	70%
	134:	,	49	0.8	0	85	()	80%
	312: 2	, ,	45	0.7	0	19	()	30%
	312: 2	, ,	25	0.7	0	7	()	30%
	252:	, ,	55	0.6	0	43	()	40%
	259:	,	69	0.6	0	47	()	80%
	261:	,	34	0.8	0	12	()	80%
	261:	,	64	0.6	0	46	()	80%
	252:	, ,	64	0.6	0	87	()	80%
	252:	, ,	39	0.8	0	71	()	80%
	131:	,	40	0.8	75	0	()	20%
	131:	,	60	0.7	34	0	()	20%
	132:		60	0.6	198	0	()	20%
	433: 1	,	59	0.5	0	61	()	30%
	433:	,	64	0.7	0	78	()	30%
	433:	,	64	0.7	0	74	()	40%
	434:	,	64	0.8	0	25	()	40%
	434:	,	60	0.8	0	37	()	40%
	55:		69	0.8	0	69	()	40%
	105:	,	60	0.8	185	0	()	25%
	313:	, , ,	54	0.8	0	65	()	30%

	313:	, , ,	54	0.8	0	131	()	40%
	313:	, ,	49	0.7	0	19	()	30%
	314:	,	49	0.7	0	83	()	40%
	314:	,	59	0.7	0	83	()	40%
	416:		110	0.7	0	76	()	30%
	284:	,	109	0.8	0	120	()	30%
	260:	, ,	69	0.5	0	59	()	30%
	260:	, ,	39	0.8	0	33	()	30%
	260:	,	69	0.6	0	36	()	40%
	260:	,	69	0.7	0	154	()	40%
	285:	, ,	64	0.7	0	94	()	50%
	286:	, ,	79	0.6	0	99	()	40%
	286:	,	34	0.7	0	23	()	30%
	286:	,	59	0.6	0	27	()	30%
	209: 1	, ,	50	0.6	0	29	()	40%
	256:	, ,	69	0.7	0	4	()	90%
	284:	,	89	0.7	0	13	()	40%
	284:	,	99	0.6	0	14	()	40%
	260:	, , ,	39	0.8	0	31	()	40%
	260:	,	69	0.7	0	25	()	50%
	252:	, , ,	39	0.8	0	21	()	60%
	252:	, ,	59	0.6	0	10	()	50%
	261:	,	29	0.8	0	24	()	60%
	261:		64	0.6	0	18	()	80%
	261:		59	0.7	0	27	()	60%
	261:	, ,	109	0.5	0	4	()	50%
	261:	, ,	59	0.7	0	31	()	70%
	262:	, ,	64	0.8	0	14	()	80%
	259:	, , , ,	39	0.8	0	204	()	80%

2014-2015

0,8

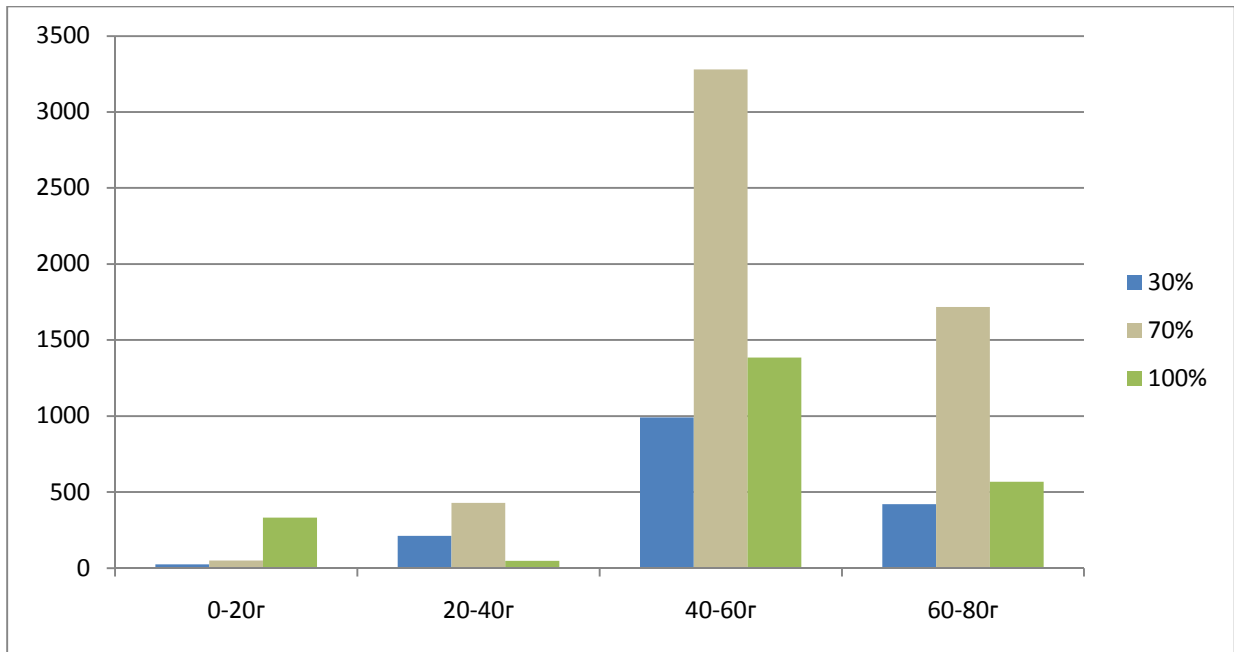
____.2

()	527	3346,351
()	13	1349
	540	4695,351

2 , 4695,351 , 1349 ,
 3346,351 2014 .

1. 70 % 40

.1



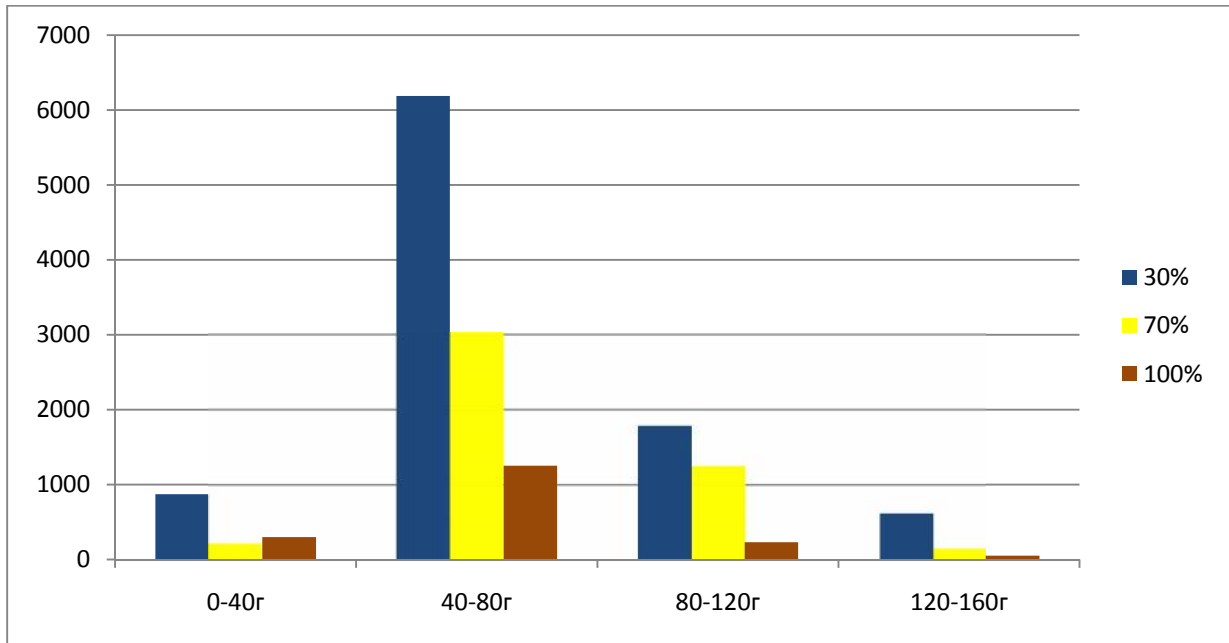
e ,

Armillaria mellea Komplex

102:		130	0.5	0	16.351	()	70%
261:	, ,	109	0.5	0	4	()	50%
416:		110	0.7	0	76	()	30%
284:	, ,	109	0.8	0	120	()	30%
259:	, ,	69	0.6	0	9	()	70%
259:	, ,	69	0.7	0	82	()	60%
259:	, ,	69	0.7	0	23	()	90%
258:	, ,	64	0.7	0	36	()	90%

30 % 2. 40-80 .

.2



5 9

0,8.

:
/ . - . /